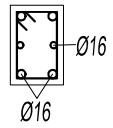
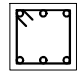
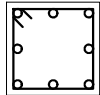
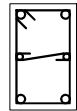

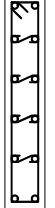


# PILARES

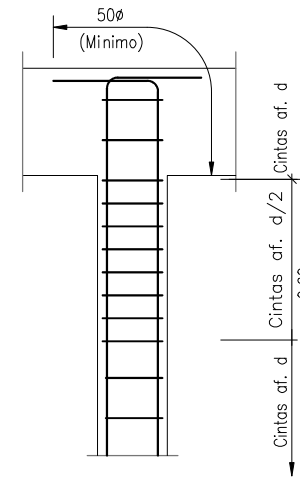
# Pormenores para Pilares

## QUADRO DE PILARES

PILARES PISOS	P1	P2	P3	P4	P5	P6
	0.20x0.30	0.25x0.25	0.35x0.35	0.25x0.40	0.20x0.70	0.15x0.80
PISO 0						
	4Ø16+2Ø12 estribos Ø8//0.15	6Ø12 estribos Ø8//0.15	8Ø16 estribos Ø8//0.15	6Ø16 estribos Ø8//0.15	12Ø12 estribos Ø8//0.15	14Ø16 estribos Ø8//0.15

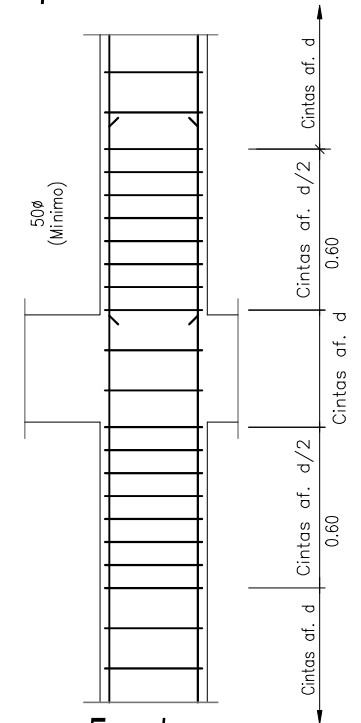
ESC: 1/20

MATERIAIS DA ESTRUTURA	
AÇO EM VARÃO	- A 400 NR
BETÃO	- C25/30 NP ENV 206
COMPRIMENTO AMARRAÇÃO	
A - CONDIÇÕES DE BOA ADERÊNCIA	- lb, net = 35Ø
B - OUTRAS CONDIÇÕES DE ADERÊNCIA	- lb, net = 50Ø
RECOBRIMENTOS	
EM GERAL	- 2.5cm
ELEMENTOS ENTERRADOS	- 5cm



Topo dos Pilares

ESC: S/E



Empalmes dos Pilares

ESC: S/E

DATA	RUBRICA	REQUERENTE:	DESENHO Nº
DESENHOU		LOCALIZAÇÃO:	06
COPIOU			
VERIFICOU			
O TÉCNICO RESPONSÁVEL:		PROJECTO DE ESTABILIDADE ARMADURAS QUADRO DE PILARES E PORMENORES	
ESCALAS: 1 / 20			
SUBSTITUI:			
SUBSTITUÍDO POR:			